



AZURC

TAKHASUSSI

Residential - Commercial - Offices - Hotel

An architectural rendering of the Azure Takhassusi building at dusk. The building is a modern, multi-story structure with a prominent white facade and dark accents. It features large glass windows and a balcony with a railing. The word "CAFE" is visible on the ground floor. The scene is set in an urban environment with trees, a street lamp, and a car. The sky is a deep blue, and the overall atmosphere is serene and sophisticated.

Nestled in Al-Narjis district of North Riyadh and spanning over 40,000 square meters, Azure Takhassusi stands as an epitome of integrated architectural development. The project offers a diverse mix of residential, administrative, commercial, and hospitality units, designed in various sizes to accommodate the unique needs of our clients.

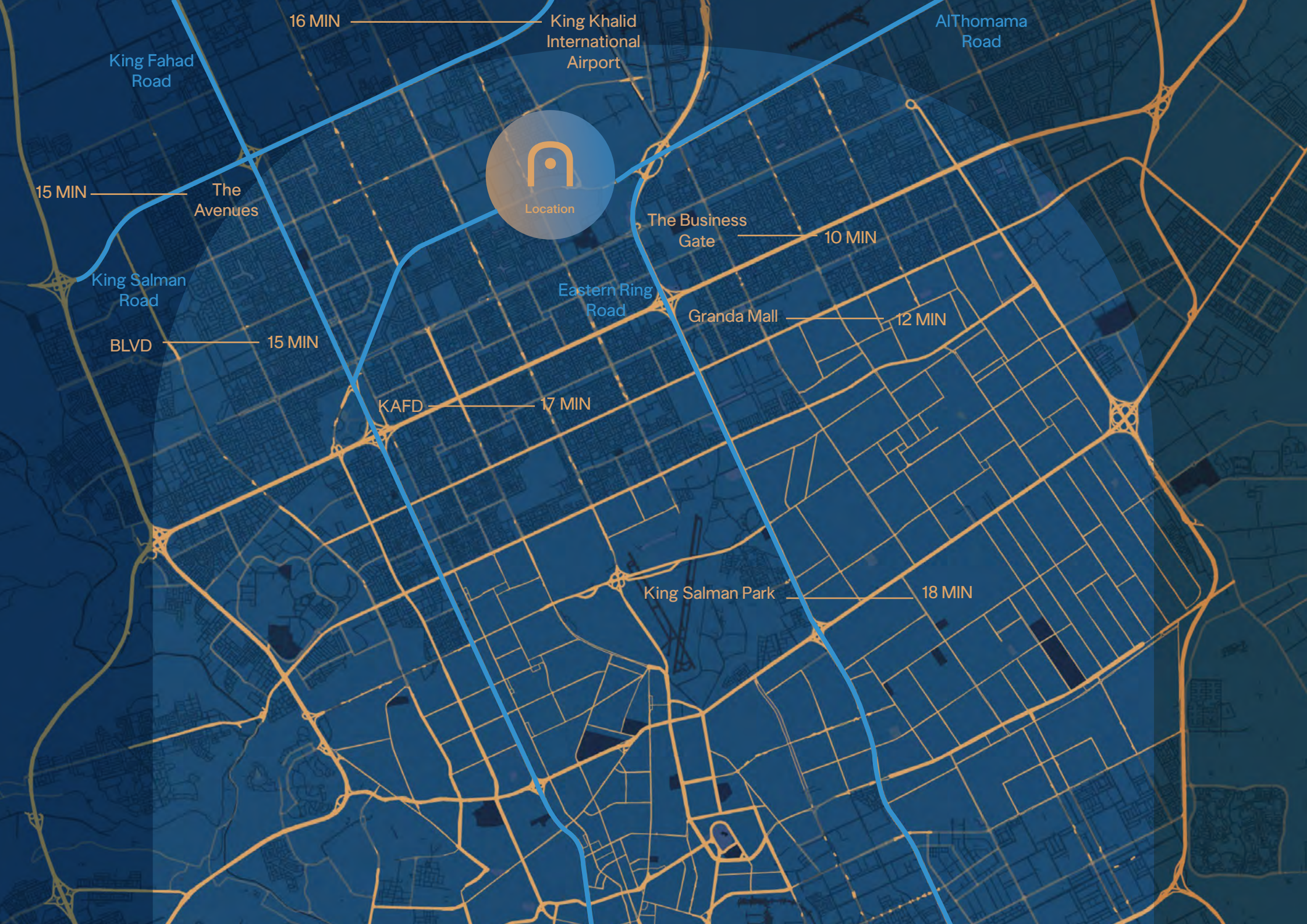
Embracing the Salmani architectural style, Azure Takhassusi seamlessly blends modern innovation with authentic Saudi heritage. This design philosophy not only reflects the Kingdom's commitment to preserving its architectural legacy but also prioritizes sustainability and environmental harmony.

Striking a delicate balance between cultural preservation and forward-thinking development, Azure Takhassusi serves as a cornerstone of Saudi Arabia's vision for sustainable urban growth, redefining the future of integrated living in the region.

Welcome to Azure Takhassusi, where art and luxury converge in the heart of Riyadh's most vibrant neighborhood. Immerse yourself in a masterpiece of hospitality, where every corner celebrates creativity and elegance. Our stunning art-themed hotel is not just a place to stay but a destination to experience. With world-class facilities, exceptional services, and a curated selection of leisure and retail outlets.

Azure Takhassusi offers a unique blend of sophistication and cultural flair. Whether you're here for business or leisure, let us inspire and delight you in an environment where art meets opulence.





Location

16 MIN

King Khalid International Airport

AlThomama Road

King Fahad Road

15 MIN

The Avenues

The Business Gate

10 MIN

King Salman Road

Eastern Ring Road

Granda Mall

12 MIN

BLVD

15 MIN

KAFD

17 MIN

King Salman Park

18 MIN





Hotel Amenities

The image shows a wide, modern hotel lobby with a polished marble floor and a ceiling with recessed lighting. The space is furnished with several armchairs and a bar area in the background. A semi-transparent blue overlay covers the left side of the image, containing text about hotel amenities.

Number of Rooms: 80

Average room area: 35 sqm

Room Types: Rooms and suites

Facilities

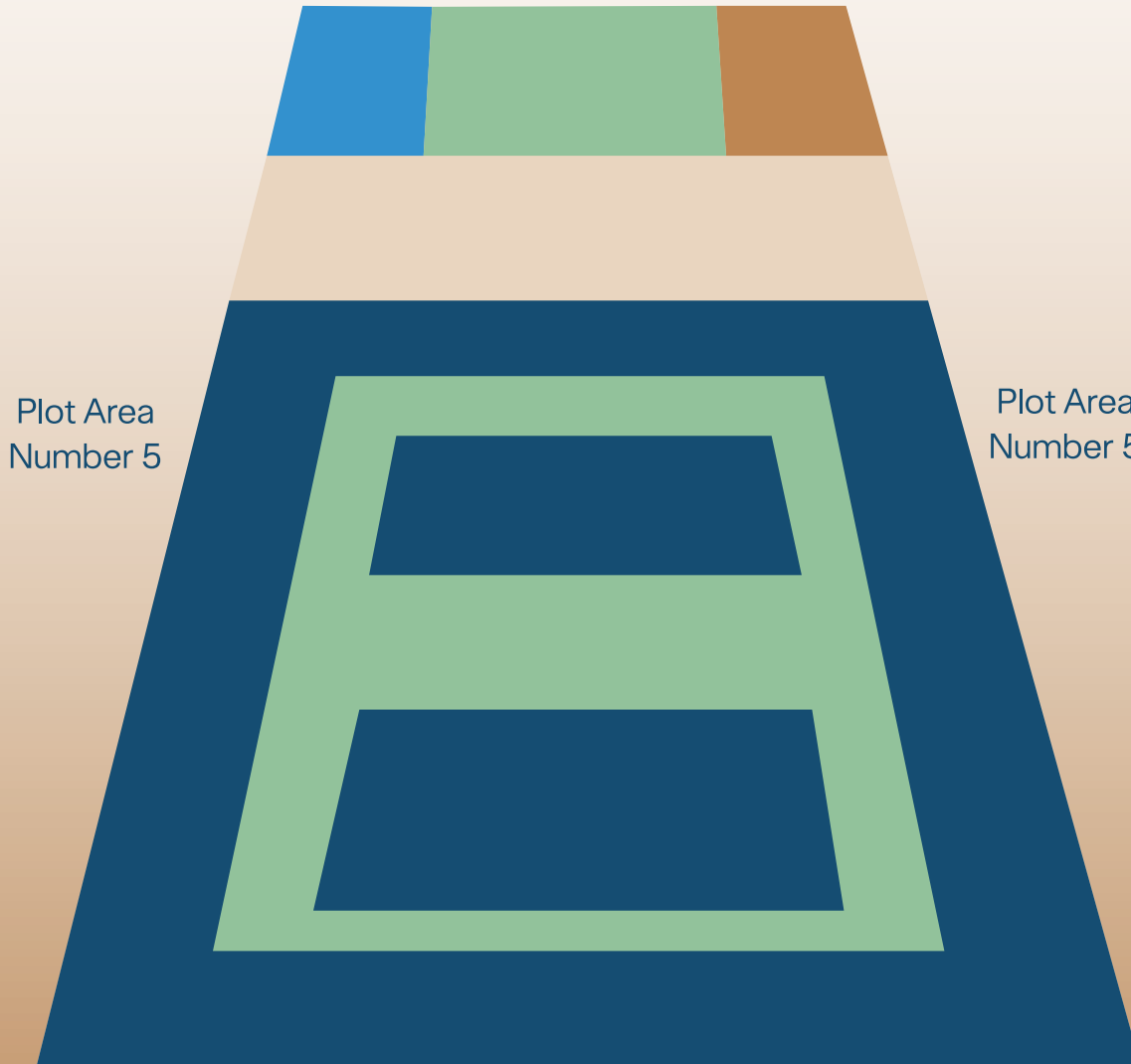
Restaurant and café

Gym

Indoor swimming pool

Lounge

Street width 46 M



Plot Area
Number 5

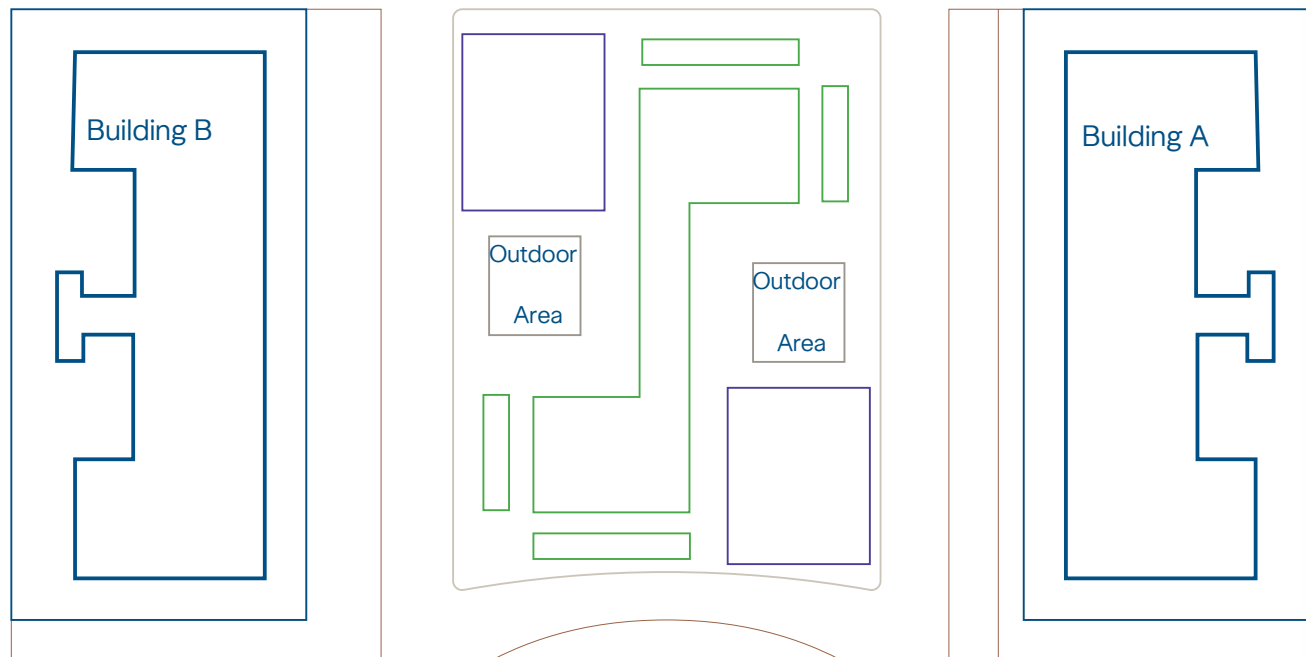
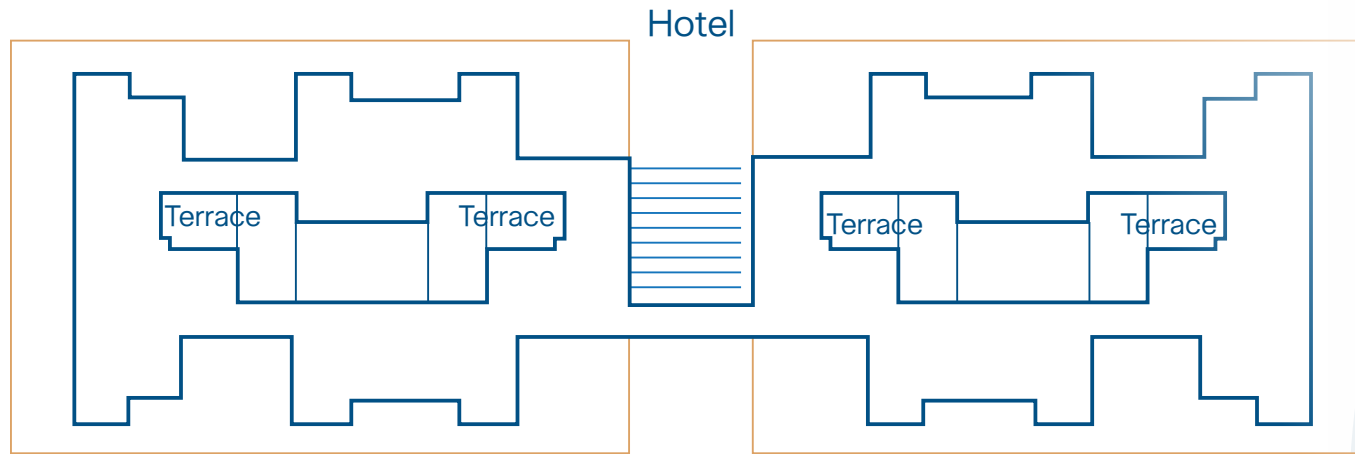
Plot Area
Number 5

Street width 30 M

Site Overview

- Residential
- Commercial Department
- Hotel
- Green Areas
- Administrative Department

Master Plan



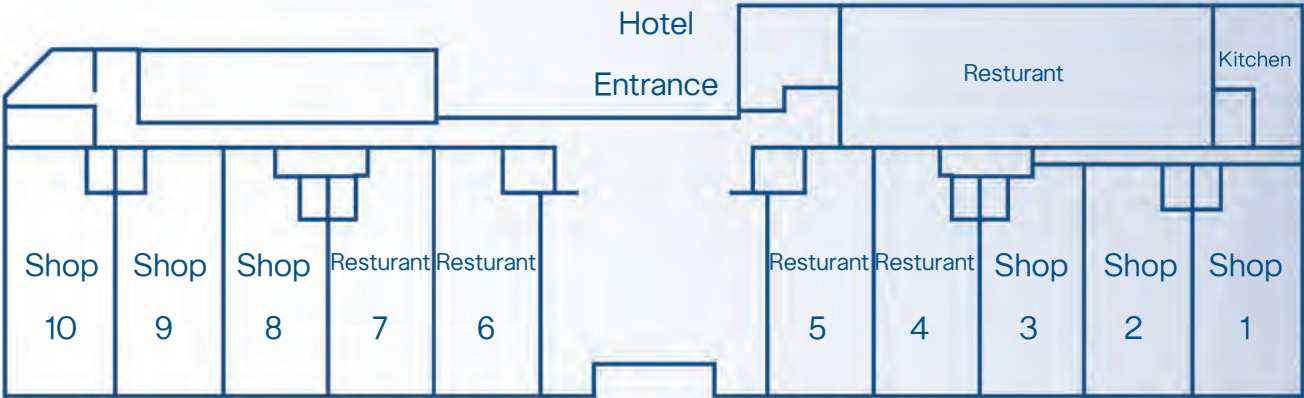
Entrance

Total administrative area (Building A) 2800 sqm

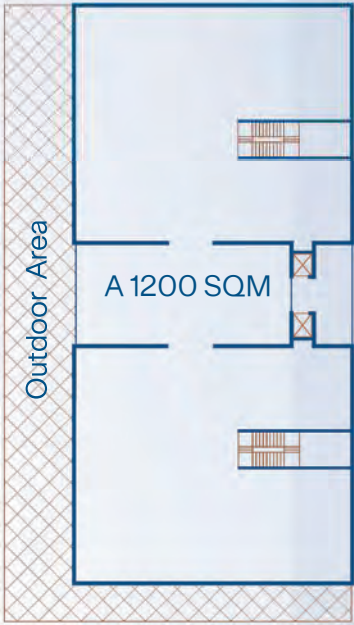
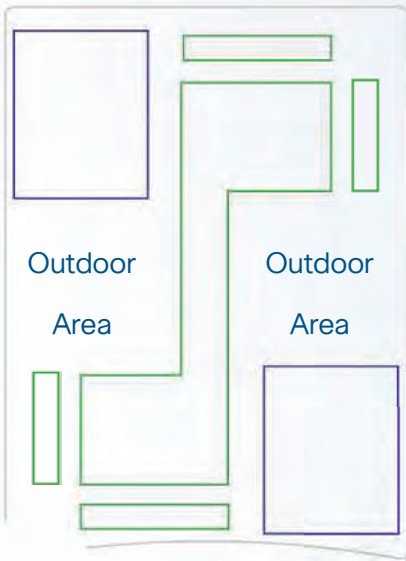
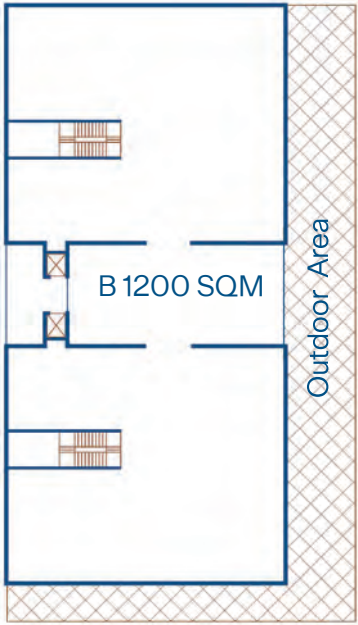
Total administrative area (Building B) 2800 sqm

Total commercial area 2373 sqm

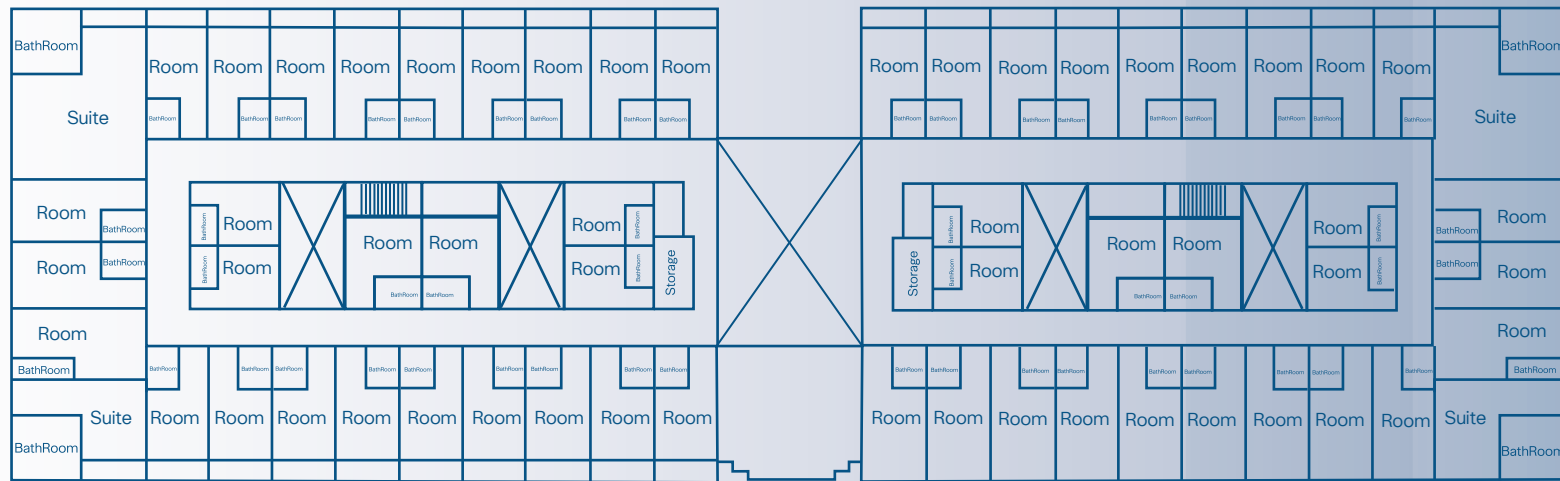
Ground Floor



- 1. 203 SQM
- 2. 195 SQM
- 3. 190 SQM
- 4. 200 SQM
- 5. 205 SQM
- 6. 205 SQM
- 7. 200 SQM
- 8. 190 SQM
- 9. 108SQM
- 10. 217 SQM
- 11. 180 SQM
- 12. 180 SQM



First Floor



Hotel

AZURE

Khaled Ababtain
Business Development Manager

+966 555337557
k.ababtain@azure.sa
www.azure.sa